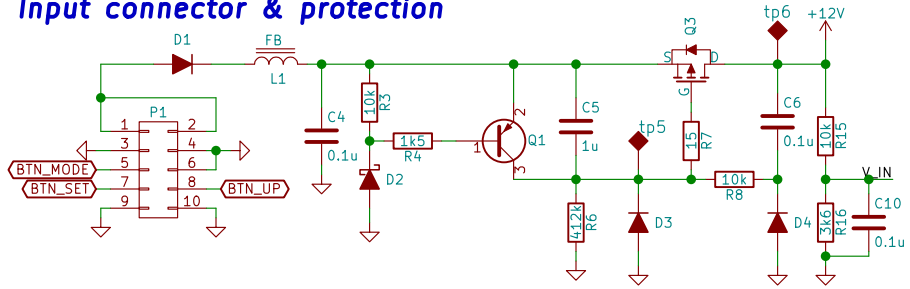
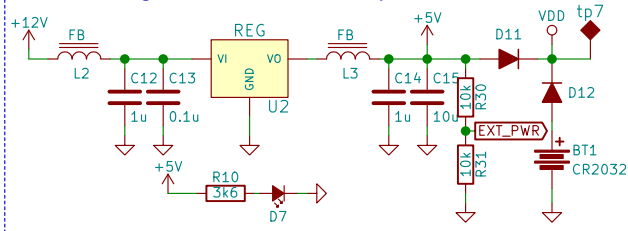


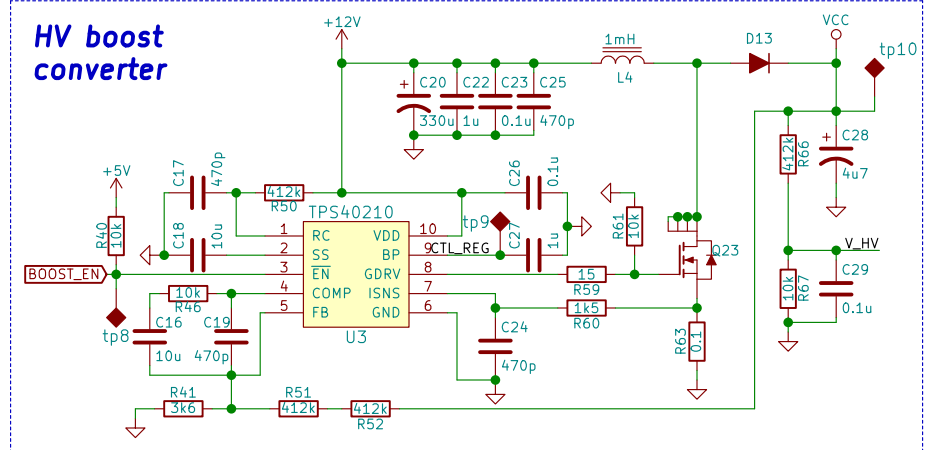
### Input connector & protection



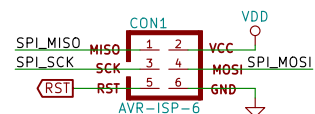
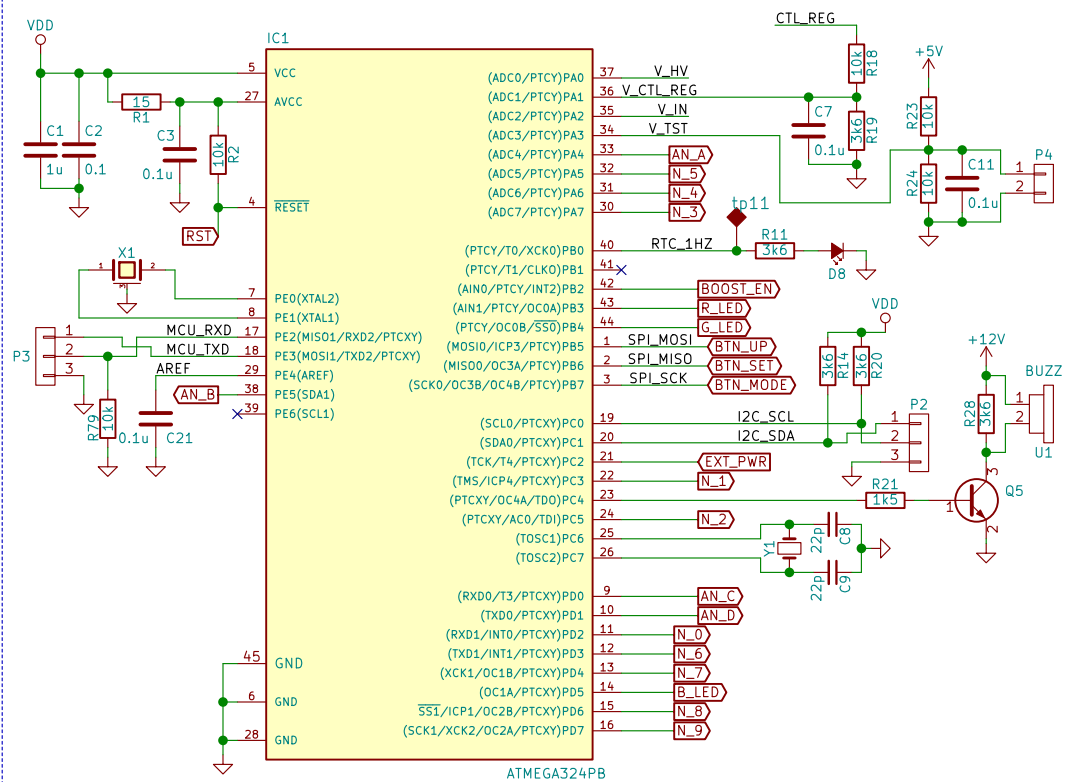
### LDO regulator & battery



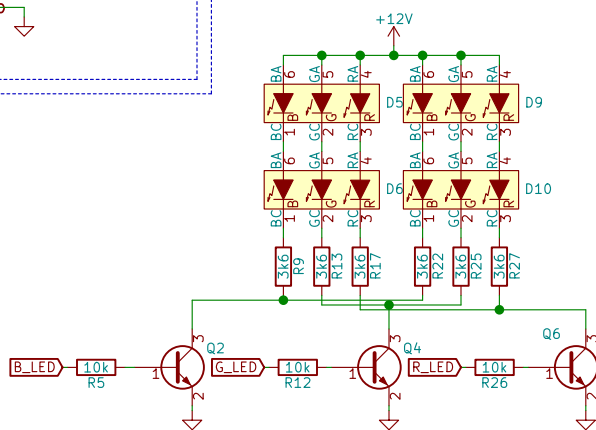
### HV boost converter



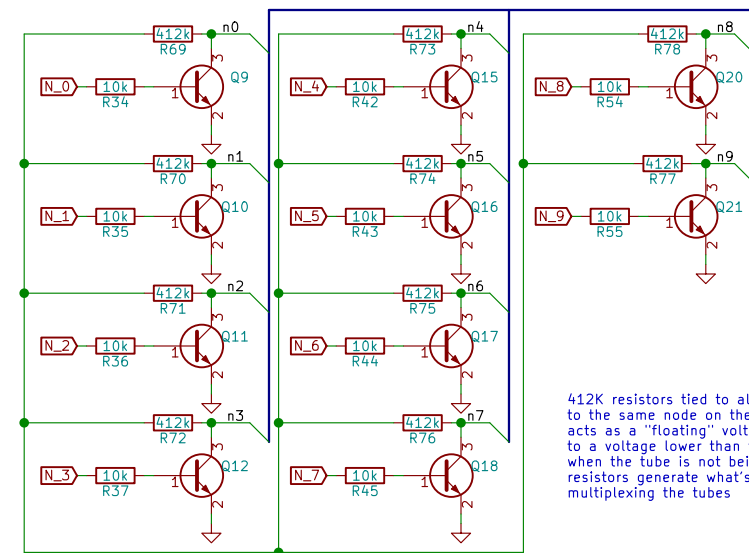
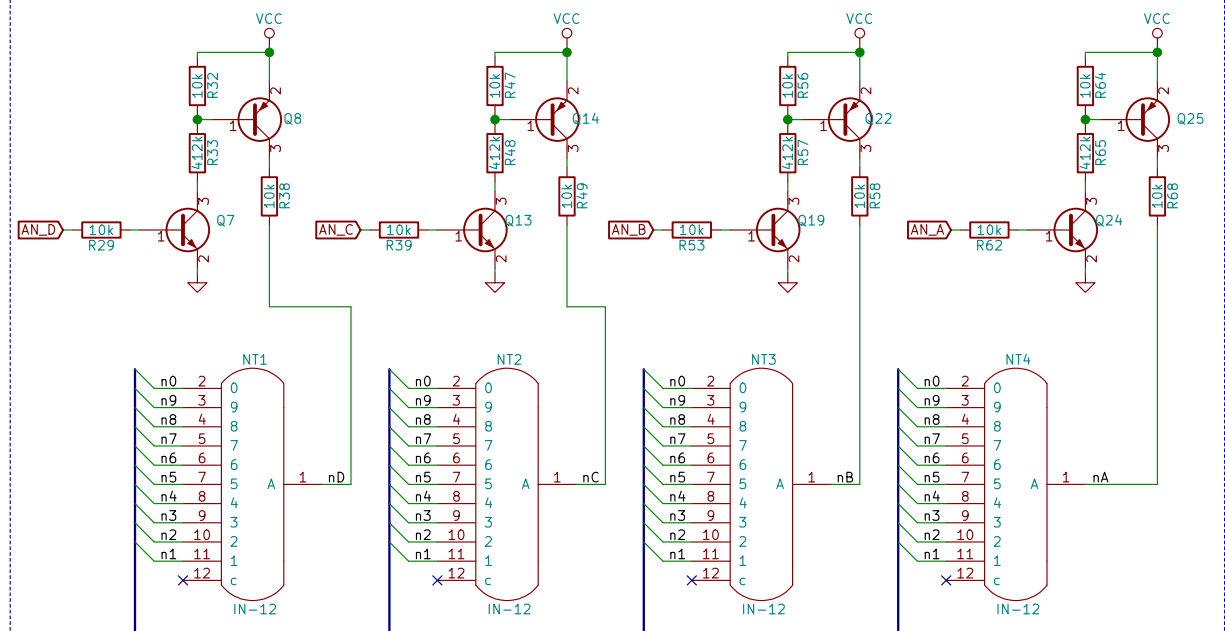
### MCU & miscellaneous



### LED & drivers



### Tubes and HV drivers



412K resistors tied to all transistors' collectors are connected to the same node on their opposite terminal, and this node acts as a "floating" voltage rail that clamps all tubes' cathodes to a voltage lower than the required to fire the filaments up when the tube is not being turned on. Not having these resistors generate what's called a "ghosting effect" when multiplexing the tubes

Nuvitron

Sheet: /  
File: nixie\_clock\_3.sch

Title: Nixie\_Clock\_3

Size: User Date: 2018-04-02

Rev: rev\_1

KiCad E.D.A. kicad 5.1.4+dfsg1-1

Id: 1/1